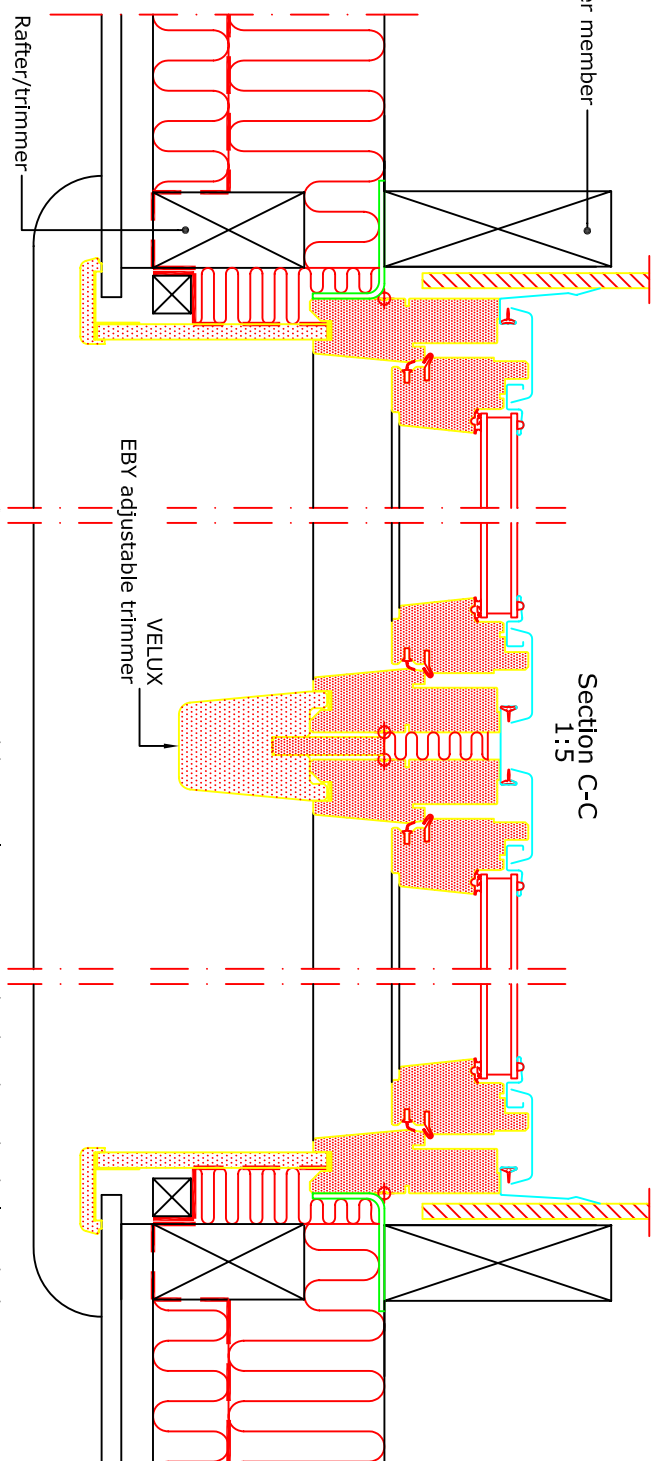
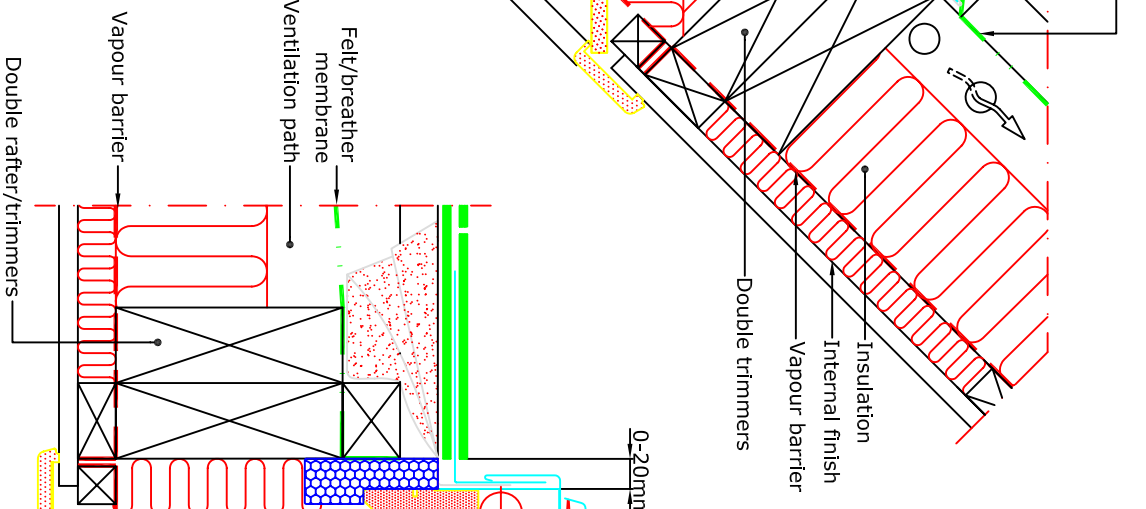


NB - Check installation instructions for widths of both roof and wall openings



Roofing	Profile	Product	Install. angle
Slates	Max. 8mm	GEL/ VEA/B/C	Min. 35° Max. 53°
BDX incl. BFX	15° 90°	EEL EEX	35° 53°
EBY W10	15° 65°	LS _{x02} incl. BBX	15° 90°

©2008 VELUX Group @VELUX and the VELUX logo are registered trademarks used under licence by the VELUX Group



VELUX A/S
Product Management
Installation support

ROOF TERRACE SYSTEM INSTALLED INTO SLATE.		Date 15.02.08	File name	Drawing no.
		All measurement in mm	A_000224_A	10.4.13
		SCO	www.VELUX.co.uk and www.VELUX.ie	

Note:
For installation of VELUX roof windows it should be ensured that the valid building regulations and requirements of the fire authorities are met.